

Kenwood TH-F6 A (TH F6A THF6A) modifications extended transmit MARS/CAP

[home](#) | [site updates](#) | [links](#)Welcome to [Www.Ham.dmz.ro](#)

09 September 2007, 12:01

**Equipment**

[New Products](#)  
[Kenwood](#)  
[Motorola](#)  
[Midland](#)  
[Yaesu](#)  
[Alinco](#)  
[Icom](#)  
[Other](#)

**Antenna tuners**

[MEJ](#)  
[LDG](#)  
[SGC](#)  
[Icom](#)  
[Yaesu](#)  
[Mizuho](#)  
[Dentron](#)  
[Kenwood](#)  
[Sommerkamp](#)  
[Barker & Williamson](#)

**Meters**

[Diamond](#)  
[Comet](#)  
[Bird](#)  
[MFJ](#)

**Antennas**

[M2](#)  
[Par](#)  
[Gap](#)  
[Sirio](#)  
[Araki](#)  
[Maco](#)  
[Nil-Jon](#)  
[Maldol](#)  
[Comet](#)  
[Hustler](#)  
[Nagoya](#)  
[Watson](#)  
[Hy-Gain](#)  
[Dressler](#)  
[Cue Dee](#)  
[Solarcon](#)  
[Diamond](#)  
[Cushcraft](#)  
[Quicksilver](#)  
[Moonraker](#)

**Power supplies**

[Powerbox](#)  
[Kenwood](#)  
[Diamond](#)  
[Samlex](#)  
[Mascot](#)  
[Daiwa](#)  
[Yaesu](#)  
[Alinco](#)  
[Icom](#)  
[H&H](#)

**Kenwood TH-F6 A (TH F6A THF6A)**

Programming interface schematics for Kenwood:  
 Programming software for Kenwood TH F6A :  
 PDF User Manual for Kenwood TH-F6A (TH F6 A THF6A) : [Kenwood TH F6A Instructions Manual](#)  
 PDF Dealer's Manual for Kenwood TH-F6A (TH F6 A THF6A) :  
 PDF Service Manual for Kenwood TH-F6A (TH F6 A THF6A) :  
 Schematics for Kenwood TH-F6A (TH F6 A THF6A) :  
[Kenwood TH F6A Block diagram](#)  
[Kenwood TH F6A Schematics](#)

Mods for Kenwood TH-F6A (TH F6 A THF6A) :  
[Kenwood TH F6A "Service Menu" documentation project](#)  
[page: 1, 2, 3, 4, 5, 6, 7](#)  
[Kenwood TH F6A MARS/CAP \(extended transmit\)](#)  
[Kenwood TH F6 A - TH F7 E "morphing" ;-\)](#)  
[Kenwood TH-F6 A Service Menu switch](#)

Known issues and problems for Kenwood TH-F6A (TH F6 A THF6A) :  
[Kenwood TH F6A defective charging jack problem](#)  
[Kenwood TH F6A external power source/charging problem](#)  
[Kenwood TH F6A low modulation level problem](#)

Kenwood TH-F6A (TH F6 A THF6A) technical specifications : [Kenwood TH F6A technical specifications](#)

**User Manuals**

Get User Manuals and How-to Info For {Your:Keyword} Products  
[www.KitchenManuals.com](#)

**1500 Watt Antenna Tuner**

Rock Solid Palstar AT1500CV \$449.95 Free Shipping  
[www.theRadioStore.net](#)

**Yaesu Vx**

Sconti sui Ricetrasmittitori! Confronta le Offerte di 200 Negozi  
[it.kelkoo.it/Ricetrasmittitori](#)

**Aux-In / Line-In Adapter**

ab 10,- fuer viele Radio-Marken ab 19,- fuer  
 Werksradios/Navigation  
[www.maxxcount.de](#)

Ads by Google

**Kenwood TH F6A (TH-F6A THF6A) extended transmit modifications****Note:**

The images in this page are from TH F7E, so please do not be fooled by those small differences in diodes configuration ;-).

**Warning:**

This modification will reset your radio and therefore clear all pre-programmed memories etc. Please write safely police, aviation and cordless phone frequencies saved in your memory;-)



Ads by Google

**User Manuals**

Get User Manuals and  
 How-to Info For  
 {Your:Keyword} Products  
[www.KitchenManuals.com](#)

**Kenwood Ubz Lh68**

Sconti sui  
 Ricetrasmittitori!  
 Confronta i Prezzi di 200  
 Negozi  
[it.kelkoo.it/Ricetrasmittitori](#)

**Manufactory Direct Sales**

Hundreds of aftermarket  
 two-way radio batteries  
 and accessories.  
[www.prostarbatteries.com](#)

**Canon EF lenses**

Canon EOS Pro Dealer.  
 New Low Prices on Many  
 Lenses.  
[www.waltersphotovideo.co.uk](#)

**Aux-In / Line-In Adapter**

ab 10,- fuer viele Radio-  
 Marken ab 19,- fuer  
 Werksradios/Navigation  
[www.maxxcount.de](#)



**Rotators**

[M2](#)  
[CDE](#)  
[Yaesu](#)  
[Create](#)  
[Kenpro](#)

**Power amplifiers**

[Beko](#)  
[Icom](#)  
[Alinco](#)  
[Drake](#)  
[Yaesu](#)  
[Daiwa](#)  
[Collins](#)  
[Kenwood](#)  
[DanAmps](#)  
[Ameritron](#)  
[Autophon](#)  
[Eto/Alpha](#)  
[Command Technologies](#)  
[E.F.Johnson](#)  
[Dentron Radio Co.](#)

**CB Equipment**

[President](#)  
[Midland](#)  
[Uniden](#)  
[Zodiac](#)

**FRS/GMRS**

[Bell](#)  
[GPX](#)  
[ENC](#)  
[Tekk](#)  
[Icom](#)  
[Sony](#)  
[Alinco](#)  
[Drake](#)  
[Cobra](#)  
[Maxon](#)  
[Vertex](#)  
[Conair](#)  
[Uniden](#)  
[Jenson](#)  
[Ranger](#)  
[Midland](#)  
[Whistler](#)  
[Magnum](#)  
[Unwired](#)  
[Coleman](#)  
[Motorola](#)  
[Audiovox](#)  
[Memorex](#)  
[Columbia](#)  
[Samsung](#)  
[Standard](#)  
[Kenwood](#)  
[Cherokee](#)  
[Panasonic](#)  
[Freetalker](#)  
[Vtech Vtalk](#)  
[RadioShack](#)  
[Fanon Courier](#)  
[Sharper Image](#)  
[General Electric](#)  
[Oregon Scientific](#)

**PMR446**

[Sommerkamp](#)

If you have never removed surface mount devices before, then experiment on some old PCB's first, or even better, on your friend's TH F6 handheld, before destroying or making a mess of your new radio. If your radio is not new, go ahead, mess it up ;-).

Make sure you use a low wattage soldering iron and tweezers to lift the components from the PCB. Or maybe you can use those \$2000 SMD soldering devices...

If you decide to do this modification, you do entirely at your own risk. However, make sure first you have someone to blame. Have you called your girlfriend today? ;-)

1. Remove the battery from the radio.
2. Remove the grey rubber protective cover from the right hand side of the radio. You DON'T have to remove as in this picture, just free up the SP, MIC and DC IN. If fully removed, will be a little bit hard to fix it back.



3. Remove the black plastic volume and frequency change knobs by gently pulling them vertically.
4. Remove the locking nut from the SMA aerial connector.
5. Remove the locking nut from the frequency change encoder / volume control shaft.





[FreeQuency](#)  
[Goodmans](#)  
[Kenwood](#)  
[Lafayette](#)  
[President](#)  
[Binatone](#)  
[Motorola](#)  
[Multicom](#)  
[Albrecht](#)  
[Maycom](#)  
[Topcom](#)  
[Xtreme](#)  
[Ondico](#)  
[Telcom](#)  
[Maxon](#)  
[Vertex](#)  
[Zodiac](#)  
[Yaesu](#)  
[Cobra](#)  
[Alinco](#)  
[Icom](#)  
[Alan](#)  
[ITT](#)

### Repeaters

[GME](#)  
[Icom](#)  
[Zodiac](#)  
[Kenwood](#)

### Transverters

[Microwave Modules](#)  
[Tokyo Hy-Power](#)  
[SSB Electronics](#)  
[Tecnostudi](#)  
[Kenwood](#)  
[Yaesu](#)  
[Minix](#)

### Ham resources

[Propagation:](#)  
[Sporadic E skip \(Es\)](#)  
[Backscatter](#)  
[Tropo](#)  
[Meteor Scatter \(MS\)](#)  
[F2 Skip](#)  
[Aurora](#)  
[Trans-equatorial](#)  
[scatter \(TE\)](#)  
[Lightning scatter \(LS\)](#)

6. With the battery removed, look at the rear of the radio and remove the two screws at the bottom.



7. Now, Doc, let's open your next victim. It's best to gently open the radio from the bottom until you have a gap of about 10mm. (Nurse, retractor please ;-). Then hold the front panel in the palm of your left hand and gently slide the main body of the radio downwards with your right hand, until the aerial and frequency change encoder shaft are clear of the holes in the top panel of the radio. Take care not to open the radio too fast, because the internal speaker wires are very short.



8. With the radio opened up like a book, look at the left hand side of the PCB just to the left of the PCB

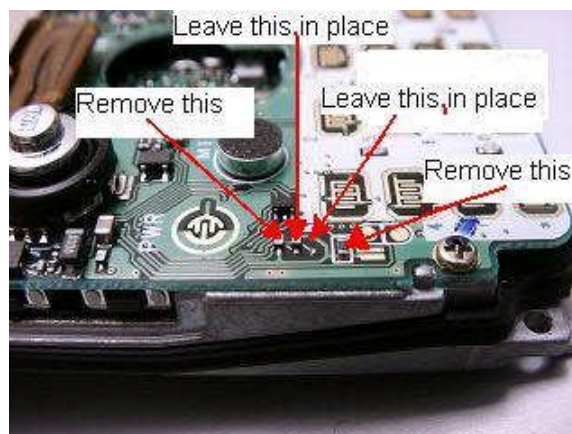


mounted microphone. You should see three diodes (if your transceiver is TH F6). In the next picture you will see only two diodes and an open pad, since the picture is from an TH F7E.

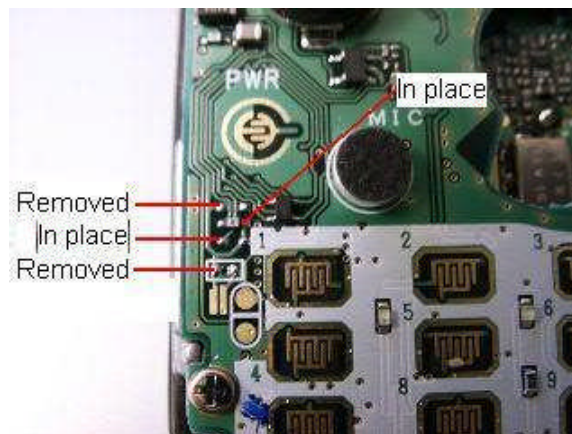
These photo's shows radio before modification (with the third missing diode, as described above...)



9. Remove only the top diode. There still should be two diodes in the middle and the bottom position.
10. Finally look just below the third diode and find a resistor (zero ohm) to the left of the keypad number "1". This also must be removed to complete the modification.



This photo shows radio after modification.



11. Reassemble the radio taking care not to trap the speaker wires and also check that the small joystick and keypad membrane seats correctly.



OK That's it...

The TH-F7E will now Transmit and Receive in this intervals:

[137MHz, 174MHz)  
[216MHz, 235MHz)  
[410MHz, 470MHz)

### More Kenwood Radioamateur Transceivers

#### Kenwood VHF/UHF Handhelds:

[Kenwood TH-D7AG \(TH D7 AG THD7AG\): mods manuals](#)  
[Kenwood TH-D7E \(TH D7E THD7E\): mods manuals](#)  
[Kenwood TH-F6A \(TH F6A THF6A\): mods manuals](#)  
[Kenwood TH-F7E \(TH F7E THF7E\): mods manuals](#)  
[Kenwood TH-G71E \(TH G71E THG71E\): mods manuals](#)  
[Kenwood TH-K2AT \(TH K2 AT THK2AT\): mods manuals](#)  
[Kenwood TH-K2E \(TH K2E THK2E\): mods manuals](#)  
[Kenwood TH-K2ET \(TH K2ET THK2ET\): mods manuals](#)  
[Kenwood TH-K4E \(TH K4E THK4E\): mods manuals](#)  
[Kenwood TH-K7 \(TH K7 THK7\): mods manuals](#)  
[Kenwood TH-21AT \(TH 21AT TH21AT\): mods manuals](#)  
[Kenwood TH-21E \(TH 21E TH21E\): mods manuals](#)  
[Kenwood TH-22E \(TH 22E TH22E\): mods manuals](#)  
[Kenwood TH-25AT \(TH 25AT TH25AT\): mods manuals](#)  
[Kenwood TH-25E \(TH 25E TH25E\): mods manuals](#)  
[Kenwood TH-26E \(TH 26E TH26E\): mods manuals](#)  
[Kenwood TH-27E \(TH 27E TH27E\): mods manuals](#)  
[Kenwood TH-28E \(TH 28E TH28E\): mods manuals](#)  
[Kenwood TH-41E \(TH 41E TH41E\): mods manuals](#)  
[Kenwood TH-42E \(TH 42E TH42E\): mods manuals](#)  
[Kenwood TH-45AT \(TH 45AT TH45AT\): mods manuals](#)  
[Kenwood TH-45E \(TH 45E TH45E\): mods manuals](#)  
[Kenwood TH-46E \(TH 46E TH46E\): mods manuals](#)  
[Kenwood TH-47E \(TH 47E TH47E\): mods manuals](#)  
[Kenwood TH-48E \(TH 48E TH48E\): mods manuals](#)  
[Kenwood TH-55E \(TH 55E TH55E\): mods manuals](#)  
[Kenwood TH-59 \(TH 59 TH59\): mods manuals](#)  
[Kenwood TH-75E \(TH 75E TH75E\): mods manuals](#)  
[Kenwood TH-77A \(TH 77A TH77A\): mods manuals](#)  
[Kenwood TH-77E \(TH 77E TH77E\): mods manuals](#)  
[Kenwood TH-78E \(TH 78E TH78E\): mods manuals](#)  
[Kenwood TH-79E \(TH 79E TH79E\): mods manuals](#)  
[Kenwood TH-89 \(TH 89 TH89\): mods manuals](#)  
[Kenwood TH-205E \(TH 205E TH205E\): mods manuals](#)  
[Kenwood TH-215E \(TH 215E TH215E\): mods manuals](#)  
[Kenwood TH-405E \(TH 405E TH405E\): mods manuals](#)  
[Kenwood TH-415E \(TH 415E TH415E\): mods manuals](#)  
[Kenwood TR-2200A \(TR 2200A TR2200A\): mods](#)

manuals

[Kenwood TR-2200G \(TR 2200G TR2200G\): mods](#)  
manuals

[Kenwood TR-2200GII \(TR 2200GII TR2200GII\): mods](#)  
manuals

[Kenwood TR-2200GX \(TR 2200GX TR2200GX\): mods](#)  
manuals

[Kenwood TR-2200 \(TR 2200 TR2200\): mods manuals](#)  
[Kenwood TR-2300 \(TR 2300 TR2300\): mods manuals](#)  
[Kenwood TR-2400 \(TR 2400 TR2400\): mods manuals](#)  
[Kenwood TR-2500 \(TR 2500 TR2500\): mods manuals](#)  
[Kenwood TR-2600E \(TR 2600 E TR2600E\): mods](#)

manuals

[Kenwood TR-3200 \(TR 3200 TR3200\): mods manuals](#)  
[Kenwood TR-3500 \(TR 3500 TR3500\): mods manuals](#)  
[Kenwood TR-3600 \(TR 3600 TR3600\): mods manuals](#)

#### Kenwood Mobile VHF/UHF Transceivers:

[Kenwood TM-D700A \(TM D700A TMD700A\): mods](#)  
manuals  
[Kenwood TM-D700E \(TM D700E TMD700E\): mods](#)  
manuals  
[Kenwood TM-G707E \(TM G707E TMG707E\): mods](#)



## manuals

[Kenwood TM-V7A \(TM V7A TMV7A\)](#): mods manuals  
[Kenwood TM-V7E \(TM V7E TMV7E\)](#): mods manuals  
[Kenwood TM-V708 \(TM V708 TMV708\)](#): mods manuals  
[Kenwood TM-V708A \(TM V708A TMV708A\)](#): mods

## manuals

[Kenwood TM-201A \(TM 201A TM201A\)](#): mods manuals  
[Kenwood TM-211E \(TM 211E TM211E\)](#): mods manuals  
[Kenwood TM-221E \(TM 221E TM221E\)](#): mods manuals  
[Kenwood TM-231E \(TM 231E TM231E\)](#): mods manuals  
[Kenwood TM-241E \(TM 241E TM241E\)](#): mods manuals  
[Kenwood TM-251E \(TM 251E TM251E\)](#): mods manuals  
[Kenwood TM-255E \(TM 255E TM255E\)](#): mods manuals  
[Kenwood TM-261A \(TM 261A TM261A\)](#): mods manuals  
[Kenwood TM-271A \(TM 271 A TM271A\)](#): mods manuals  
[Kenwood TM-401A \(TM 401A TM401A\)](#): mods manuals  
[Kenwood TM-411E \(TM 411E TM411E\)](#): mods manuals  
[Kenwood TM-431E \(TM 431E TM431E\)](#): mods manuals  
[Kenwood TM-441E \(TM 441E TM441E\)](#): mods manuals  
[Kenwood TM-451E \(TM 451E TM451E\)](#): mods manuals  
[Kenwood TM-455E \(TM 455E TM455E\)](#): mods manuals  
[Kenwood TM-461A \(TM 461A TM461A\)](#): mods manuals  
[Kenwood TM-521A \(TM 521A TM521A\)](#): mods manuals  
[Kenwood TM-531E \(TM 531E TM531E\)](#): mods manuals  
[Kenwood TM-541 \(TM 541 TM541\)](#): mods manuals  
[Kenwood TM-631A \(TM 631A TM631A\)](#): mods manuals  
[Kenwood TM-642 \(TM 642 TM642\)](#): mods manuals  
[Kenwood TM-701E \(TM 701E TM701E\)](#): mods manuals  
[Kenwood TM-702E \(TM 702E TM702E\)](#): mods manuals  
[Kenwood TM-721A \(TM 721A TM721A\)](#): mods manuals  
[Kenwood TM-721E \(TM 721E TM721E\)](#): mods manuals  
[Kenwood TM-731A \(TM 731A TM731A\)](#): mods manuals  
[Kenwood TM-731E \(TM 731E TM731E\)](#): mods manuals  
[Kenwood TM-732A \(TM 732A TM732A\)](#): mods manuals  
[Kenwood TM-732E \(TM 732E TM732E\)](#): mods manuals  
[Kenwood TM-733E \(TM 733E TM733E\)](#): mods manuals  
[Kenwood TM-741E \(TM 741E TM741E\)](#): mods manuals  
[Kenwood TM-742E \(TM 742E TM742E\)](#): mods manuals  
[Kenwood TM-833S \(TM 833S TM833S\)](#): mods manuals  
[Kenwood TM-842 \(TM 842 TM842\)](#): mods manuals  
[Kenwood TM-941A \(TM 941A TM941A\)](#): mods manuals  
[Kenwood TM-942 \(TM 942 TM942\)](#): mods manuals  
[Kenwood TM-2400 \(TM 2400 TM2400\)](#): mods manuals  
[Kenwood TM-2550E \(TM 2550E TM2550E\)](#): mods

## manuals

[Kenwood TR-50 \(TR 50 TR50\)](#): mods manuals  
[Kenwood TR-751A \(TR 751A TR751A\)](#): mods manuals  
[Kenwood TR-751E \(TR 751E TR751E\)](#): mods manuals  
[Kenwood TR-851E \(TR 851E TR851E\)](#): mods manuals  
[Kenwood TR-7100 \(TR 7100 TR7100\)](#): mods manuals  
[Kenwood TR-7200G \(TR 7200G TR7200G\)](#): mods

## manuals

[Kenwood TR-7400A \(TR 7400A TR7400A\)](#): mods

## manuals

[Kenwood TR-7500 \(TR 7500 TR7500\)](#): mods manuals  
[Kenwood TR-7600 \(TR 7600 TR7600\)](#): mods manuals  
[Kenwood TR-7730 \(TR 7730 TR7730\)](#): mods manuals  
[Kenwood TR-7800 \(TR 7800 TR7800\)](#): mods manuals  
[Kenwood TR-7850 \(TR 7850 TR7800\)](#): mods manuals  
[Kenwood TR-7930 \(TR 7930 TR7930\)](#): mods manuals  
[Kenwood TR-7950 \(TR 7950 TR7950\)](#): mods manuals  
[Kenwood TR-8300 \(TR 8300 TR8300\)](#): mods manuals  
[Kenwood TR-8400 \(TR 8400 TR8400\)](#): mods manuals  
[Kenwood TR-9000 \(TR 9000 TR9000\)](#): mods manuals  
[Kenwood TR-9130 \(TR 9130 TR9130\)](#): mods manuals  
[Trio TR-9300 \(TR 9300 TR9300\)](#): mods manuals  
[Kenwood TR-9500 \(TR 9500 TR9500\)](#): mods manuals  
[Kenwood TS-60S \(TS 60S TS60S\)](#): mods manuals  
[Kenwood TW-4000A \(TW 4000A TW4000A\)](#): mods

## manuals

[Kenwood TW-4100E \(TW 4100E TW4100E\)](#): mods

## manuals

[Kenwood TM-V71A \(TM V 71 A TMV71A\)](#): mods manuals



**Kenwood Base VHF/UHF:**

[Trio TR-2E \(TR 2 E TR2E\)](#): mods manuals  
[Kenwood TS-600 \(TS 600 TS600\)](#): mods manuals  
[Kenwood TS-700A \(TS 700 A TS700A\)](#): mods manuals  
[Kenwood TS-700G \(TS 700 G TS700G\)](#): mods manuals  
[Kenwood TS-700S \(TS 700 S TS700S\)](#): mods manuals  
[Kenwood TS-711E \(TS 711 E TS711E\)](#): mods manuals  
[Kenwood TS-770 \(TS 770 TS770\)](#): mods manuals  
[Kenwood TS-780 \(TS 780 TS780\)](#): mods manuals  
[Kenwood TS-790E \(TS 790 E TS790E\)](#): mods manuals  
[Kenwood TS-811E \(TS 811 E TS811E\)](#): mods manuals

**Kenwood HF and More Transceivers:**

[Kenwood TS-50S \(TS 50 S TS50S\)](#): mods manuals  
[Kenwood TS-120S \(TS 120 S TS120S\)](#): mods manuals  
[Kenwood TS-120V \(TS 120 V TS120V\)](#): mods manuals  
[Kenwood TS-130S \(TS 130 S TS130S\)](#): mods manuals  
[Kenwood TS-130V \(TS 130 V TS130V\)](#): mods manuals  
[Kenwood TS-140S \(TS 140 S TS140S\)](#): mods manuals  
[Kenwood TS-180S \(TS 180 S TS180S\)](#): mods manuals  
[Kenwood TS-430S \(TS 430 S TS430S\)](#): mods manuals  
[Kenwood TS-440S \(TS 440 S TS440S\)](#): mods manuals  
[Kenwood TS-450S \(TS 450 S TS450S\)](#): mods manuals  
[Kenwood TS-480 \(TS 480 TS480\)](#): mods manuals  
[Kenwood TS-510 \(TS 510 TS510\)](#): mods manuals  
[Kenwood TS-515 \(TS 515 TS515\)](#): mods manuals  
[Kenwood TS-520S \(TS 520 S TS520S\)](#): mods manuals  
[Kenwood TS-520SE \(TS 520 SE TS520SE\)](#): mods manuals  
manuals  
[Kenwood TS-530S \(TS 530 S TS530S\)](#): mods manuals  
[Kenwood TS-570DG \(TS 570 DG TS570DG\)](#): mods manuals  
manuals  
[Kenwood TS-570S \(TS 570 S TS570S\)](#): mods manuals  
[Kenwood TS-660 \(TS 660 TS660\)](#): mods manuals  
[Kenwood TS-670 \(TS 670 TS670\)](#): mods manuals  
[Kenwood TS-680S \(TS 680 S TS680S\)](#): mods manuals  
[Kenwood TS-690S \(TS 690 S TS690S\)](#): mods manuals  
[Kenwood TS-820 \(TS 820 TS820\)](#): mods manuals  
[Kenwood TS-820S \(TS 820 S TS820S\)](#): mods manuals  
[Kenwood TS-830S \(TS 830 S TS830S\)](#): mods manuals  
[Kenwood TS-850S \(TS 850 S TS850S\)](#): mods manuals  
[Kenwood TS-870S \(TS 870 S TS870S\)](#): mods manuals  
[Kenwood TS-900 \(TS 900 TS900\)](#): mods manuals  
[Kenwood TS-930S \(TS 930 S TS930S\)](#): mods manuals  
[Kenwood TS-940S \(TS 940 S TS940S\)](#): mods manuals  
[Kenwood TS-950S \(TS 950 S TS950S\)](#): mods manuals  
[Kenwood TS-950SDX \(TS 950 SDX TS950SDX\)](#): mods manuals  
manuals  
[Kenwood TS-2000 \(TS 2000 TS2000 TS-2000X TS-B2000\)](#): mods manuals

**Kenwood Transmitters:**

[Kenwood T-599D \(T 599D T599D\)](#): mods manuals  
[Trio TX-310 \(TX 310 TX310\)](#): mods manuals  
[Kenwood TX-599 \(TX 599 TX599\)](#): mods manuals  
[Kenwood TX-599 Custom Special \(TX 599 Custom Special TX599 Custom Special\)](#): mods manuals